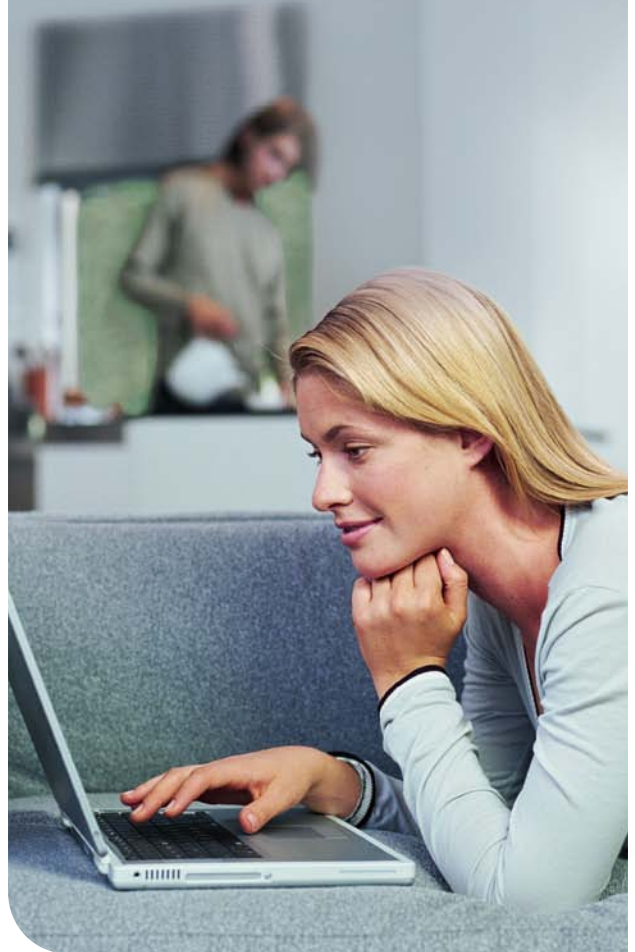


VISIT A TELSTRA STORE OR SELECTED PARTNER
VISIT BIGPOND.COM/BROADBAND
CALL 1800 220 030

BIGPOND® HOME BROADBAND

ADSL AND CABLE PRICING GUIDE



BIGPOND®HOME BROADBAND

ADSL AND CABLE PRICING IF...	YOU'RE ELIGIBLE FOR THE BIGPOND® BROADBAND BENEFIT	YOU HAVE A TELSTRA FULL SERVICE FIXED PHONE	YOU DON'T HAVE A TELSTRA FULL SERVICE FIXED PHONE
	MONTHLY PRICE ON A 24-MONTH PLAN	MONTHLY PRICE ON A 12-MONTH PLAN	
BigPond Elite® 5GB Liberty	\$29.95	\$49.95	\$59.95
BigPond Elite 50GB Liberty	\$49.95	\$69.95	\$79.95
BigPond Elite 200GB Liberty	\$69.95	\$89.95	\$99.95
BigPond Elite 500GB Liberty	\$89.95	\$109.95	\$119.95
	MINIMUM COST		
BigPond Elite 5GB Liberty	\$1,509.60 [^]	\$1,231.80 [*]	\$968.40 [†]
BigPond Elite 50GB Liberty	\$1,989.60 [^]	\$1,471.80 [*]	\$1,208.40 [†]
BigPond Elite 200GB Liberty	\$2,469.60 [^]	\$1,711.80 [*]	\$1,448.40 [†]
BigPond Elite 500GB Liberty	\$2,949.60 [^]	\$1,951.80 [*]	\$1,688.40 [†]

Once you reach your usage allowance, the speed of your service will slow to 64kbps until your next monthly billing cycle starts (or 256kbps if you are on a 200GB or a 500GB plan).

BigPond Broadband Benefit: You must have a Telstra Full Service Fixed Phone on a Single Bill with your broadband service on a 24-month plan. If you're an existing customer you may need to recontract to be eligible.

THINGS YOU NEED TO KNOW: ADSL/Cable not available in all areas.
[†] Based on ADSL/Cable plan with Self-Install Cable Home Network Gateway modem. ^{*} Based on ADSL/Cable plan with HomeLine® Plus and Self-Install Cable Home Network Gateway modem. [^] Based on ADSL/Cable plan with HomeLine® Plus and Self-Install ADSL Standard Home Network Gateway modem (BigPond Broadband Benefit). A \$9.95 delivery fee applies.